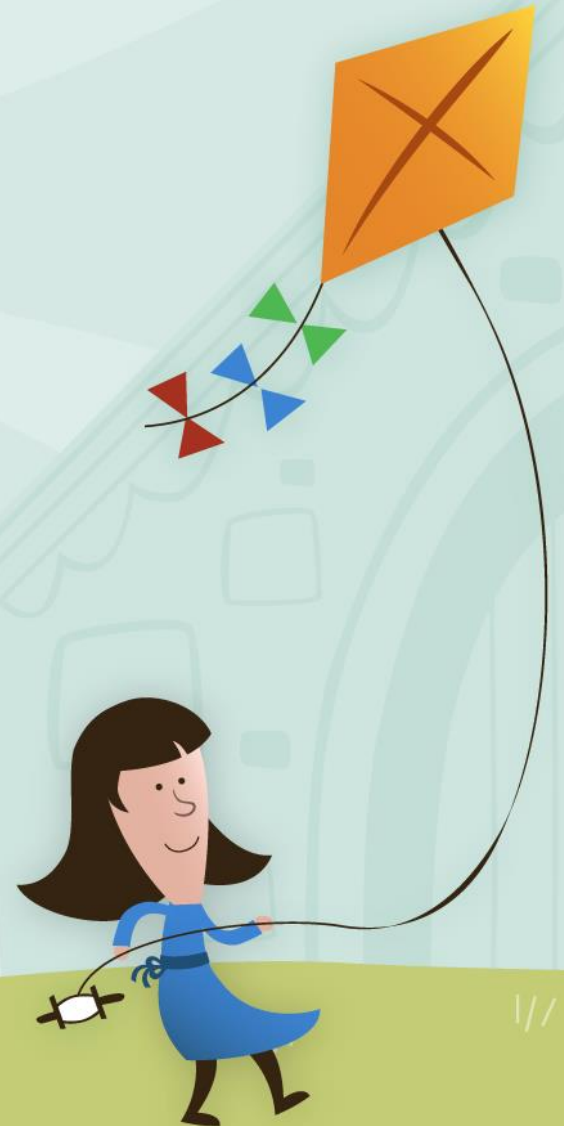


# Welcome to Year 6 at Crestwood Park



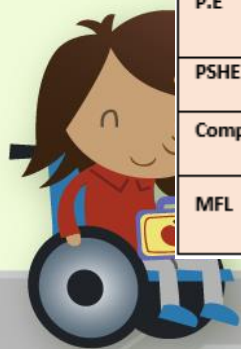
# A typical day in the life of a year 6 child...

		9.00-9.20	9.30-10.45		11.00-12.00		1.20-2.45	2.45-3.00pm	3pm - 3.20pm
	MON	ASSEMBLY	SPAG 9.30-10.00	ENGLISH 10-10.45		MATHS 11.00-12.00	Computing/RE/Music		
	TUES	ASSEMBLY /INTERVENTION	SPAG 9.30-10.00	ENGLISH 10-10.45		PE 11.00-12.00	History		
	WED	ASSEMBLY /INTERVENTION	SPAG 9.30-10.00	ENGLISH 10-10.45		MATHS 11.00-12.00	Science/MFL		
	THUR	ASSEMBLY /INTERVENTION	SPAG 9.30-10.00	ENGLISH 10-10.45		MATHS 11.00-12.00	ART	PE	
	FRI	ASSEMBLY	SPAG 9.30-10.00	ENGLISH 10-10.45		MATHS 11.00-12.00	PSHE		
				Morning Break- 10.45am-11.00am					
						Lunch-12.00-1.00pm			
						Independent Reading		Fluency Fifteen	Story Time
						Misc Track/Reading			



# Your Child's Curriculum Journey...

Subject	Autumn 1	Autumn 2	Spring 1	Spring 2	Summer 1	Summer 2
Reading	Reading skills sessions incorporated into English lessons and taught in isolation where appropriate.					
Writing	Narrative, Description, Characters/Settings	Report, Advertising, Argument, Newspaper article	Report, Narrative, Description – setting Balanced argument	Narrative, Description, Recount	Letter, Narrative, Description, Advertising	Biography, Report, Narrative, Description,
Mathematics	Place Value Addition, Subtraction, Multiplication and Division Fractions, Position and Direction		Decimals, Percentages Algebra, Converting Units Perimeter, Area and Volume		Statistics, Properties of Shape Consolidation and Themed projects	
Science	Animals including humans	Living things and their habitats	Light	Electricity	Evolution and inheritance	Evolution and inheritance
R.E	Rites of Passage		Buddhism		Leaders In Religion	
Music	Developing Melodic Phrases- How does music bring us together?	Understanding Structure and Form- How does music connect us with our past?	Gaining Confidence Through Performance – How does music improve our world?	Exploring Notation Further – How does music teach us about our community?	Exploring notation further- How does music teach us about our community?	Respecting each other through composition- How does music connect us with the environment?
Art	Colour	Drawing	Pattern	Texture	Printing	3D Form
D.T	Celebrating culture and seasonality		Pulleys or gears		Monitoring and control	
History	Battle of Britain: Why was winning the Battle of Britain in 1940 so important?	Shang Dynasty: How did a pile of dragon bones help solve an ancient Chinese mystery?			Local Area Study	
Geography						
P.E	Games- Tag- Rugby Dance	Gymnastics- Counterbalance and Counter tension Dance	Gymnastics- Matching, Mirroring and Contrasting Fitness Testing	Games- Football OAA- Preparation and Organisation	Games- Basketball Athletics – Running, Throwing and Jumping	Games- Rounders Fitness Testing
PSHE	How can we keep healthy as we grow?		How can the media influence people?		What will change as we become more independent? How do friendships change as we grow?	
Computing	Internet Communication	Webpage Creation	Variables in Games	Introduction to Spreadsheets	3D Modelling	Sensing
MFL	What's in your town? J'habite/ J'adore/ J'aime/ Je n'aime pas/ Je déteste What's in your town, singular and plural nouns		Describing personality, myself and other family members. Using intensifiers – assez, très, un peu		Talking about school subjects Giving opinions, days of the week	



# Class Expectations

- SPARKS
  - Smart
  - Polite
  - Aware
  - Respectful
  - Kind
  - Safe
- High expectations in Year 6 as they are the oldest and we are preparing them for the next part of their education journey.



# Roles and Responsibilities

- Each child has a role — Sports ambassadors, SPARKS ambassadors, Digital ambassadors, English ambassadors, House Captains, Environment ambassadors.
- Every role is important.
- Each role will contribute to school life and will help to develop various qualities.
- Year 6 pupils should take pride in these roles.
- Other roles will include School Council, Playground Pals and Lunchtime Duty.



# Statutory Tests

- SATS are scheduled to take place Monday 11<sup>th</sup> May 2026 – Thursday 14<sup>th</sup> May 2026
- Monday 11<sup>th</sup> – English: Spelling, Punctuation and Grammar Tests
- Tuesday 12<sup>th</sup> – English: Reading
- Wednesday 13<sup>th</sup> – Maths: Arithmetic and Maths: Reasoning
- Thursday 14<sup>th</sup> – Maths: Reasoning



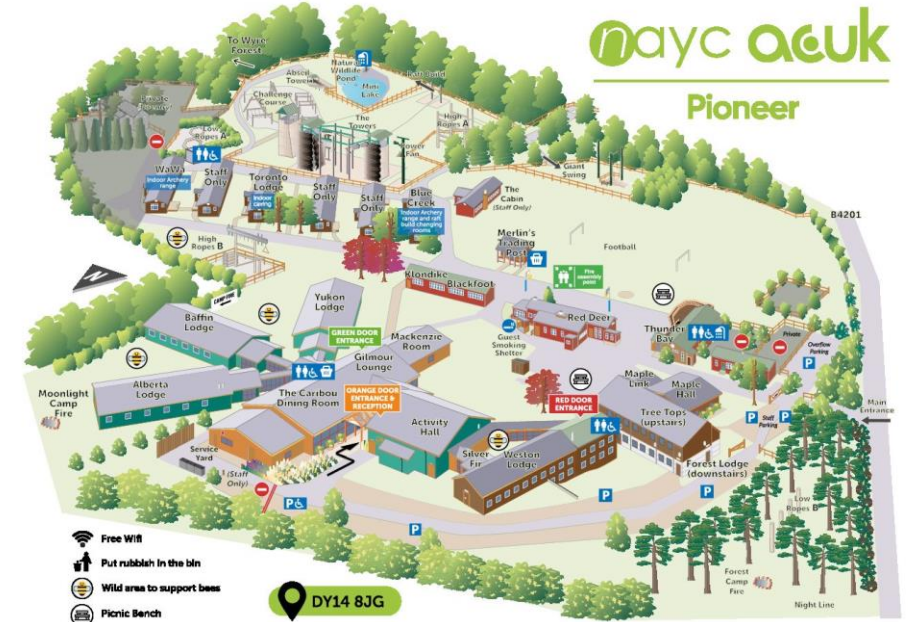


# Pioneer: Wednesday 17th June – Friday 19th June 2026

## Pioneer Activity Centre (Cleobury Mortimer)

Fabulous opportunity to develop independence, perseverance, confidence and much more....

Zip wire  
Abseiling  
Climbing  
Raft building  
Caving



The estimated cost is £250 per person – we are looking at subsidising that cost. Further information will be sent out at a later date.



# General Information

- Names in/on everything!
- Family Assemblies- Fridays at 9am
- Tuck — pre-pay online for toast or a milkshake
- Newsletters — Please read — some important information on these.
- Please make sure that you are able to access SCH LIFE as this is where we send messages.
- Homework due in on a MONDAY
- Swimming on a TUESDAY
- PE on THURSDAY Named water bottle
- Planners and Reading Diaries — available every day.
- SATS club — children will be invited to attend (starting after half term)
- Secondary School Open Evenings — coming up — You will need to book.





# What can you do to help?

- Get reading — encourage your child to read. Read yourself.
- TTRS — Times Tables are SO important, so please encourage your child to practise regularly.
- Spellings — In planners there are the Year 3,4,5 and 6 statutory spellings, please practise these at home. Also, we will be sending spellings home weekly — please practise and discuss these words.
- Support with homework. Let them have a go, support where you can and ask them to see us to if they are still unsure.
- Look out for letters regarding SATS clubs — these are after school to support your child.

